

October 12, 2020

Ms. Joanna Axelrod
Director of Community Services
City of Escondido
201 North Broadway
Escondido, CA 92025

1

Hello Ms. Axelrod,

Thank you for the opportunity to participate in the conversations about the Escondido Creek Trail Expansion and Renovation Project. It is exciting to see such great progress toward turning the creek through the city into a park space and not just a flood control channel. The Escondido Creek Conservancy (Conservancy) is excited to be a partner in this project. Additionally, congratulations on your recent appointment as Deputy City Manager!

During the discussion I asked about community gardens along the trail where residents of the city could be assigned small plots to grow vegetables, flowers, and the like. My reason for suggesting the possible inclusion of such spaces into the design are two-fold. One, I think they would be extremely popular with residents, especially those in the downtown corridor who live in apartments and condos. Second, because the more activity there is along the trail, the safer it will be (i.e., more people means greater safety). The gardens would generate daily activity as soon as they were open. If several locations along the creek could host community gardens, I think they would become a large garden, together possibly as big as the one near the Escondido police station. The advantage of this approach is that it spreads healthy civic-minded activity along the creek trail, in effect, forming a neighborhood watch along the trail. One of the biggest concerns I receive from the community whenever I talk about the trail is safety. We heard some of those concerns on the call.

I'm attaching a few screenshots of the creek with areas I think have the physical space for gardens. Some of these may not work, and there may also be other areas along the creek that may be equally as good or better. I labeled the screenshots by street location and a number. Additionally, some of the locations have adjacent space that might be available to increase the size of a gardens.

At the potential site at Ash and Washington (CG5), I show two circles. I include the whole lot, as I believe it is city-owned. I know the city may have other long-term ideas for the lot, but perhaps it could be used as a temporary location for a garden until a long-term vision is realized. The smaller circle is the strip of land next to the channel. It is wide at that location and could support many gardens (again, at this point I'm looking at land mass only). In the screenshot of the Escondido Transit Center (CG1), there are open spaces adjacent to the strip of land abutting the creek. One is a small empty fenced lot. I've included this as a possible garden space, as I believe these are public lands and in theory could be available. The same is true at the location near the post office (CG6). I have not included locations east of the post office as, beyond that point, the homes are mostly single-family residences and owners would not likely support gardens on the back of their fences. Also, I figured the residents who would most benefit from the gardens would be those with no yard, or very small yards.

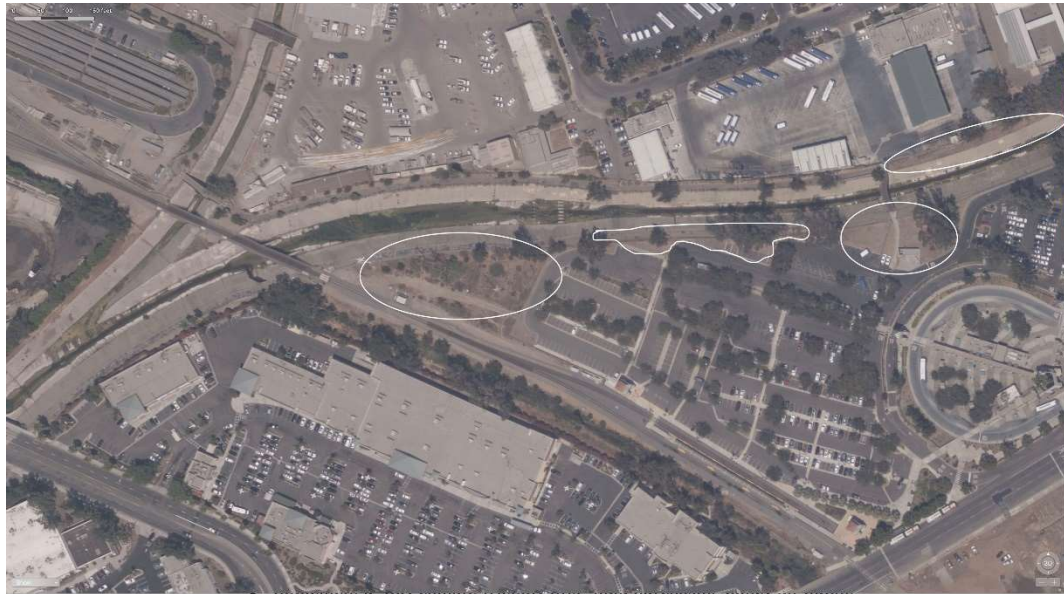
If you have any questions about these recommendations, please let me know. I can be reached at 760-215-9252. This is a wonderful project and we are very excited to partner with the city on it.

Thank you,

DocuSigned by:
Richard Murphy
F46E6CE6F7E0479...

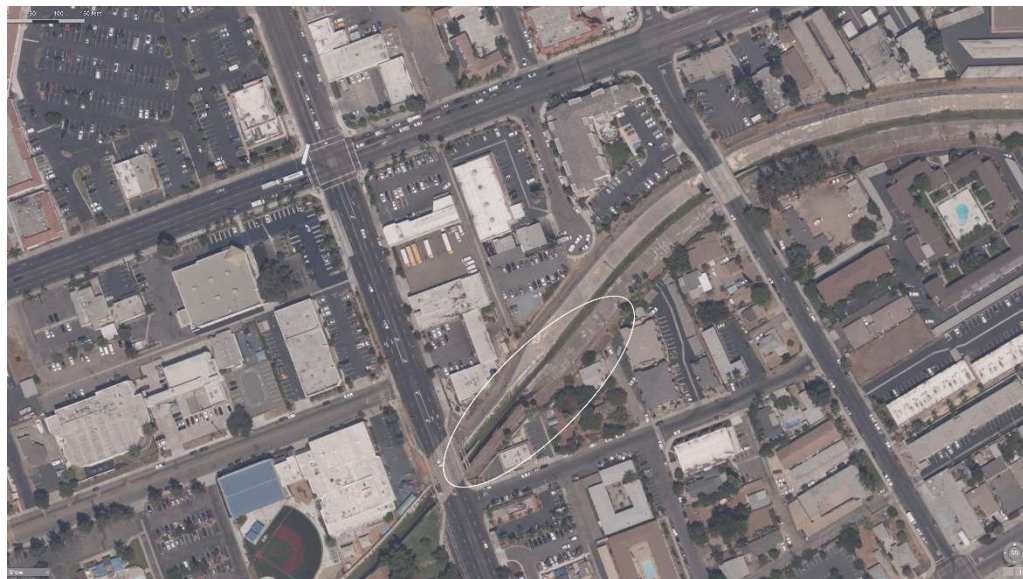
Richard Murphy
President
The Escondido Creek Conservancy

Potential Community Garden Photo Locations

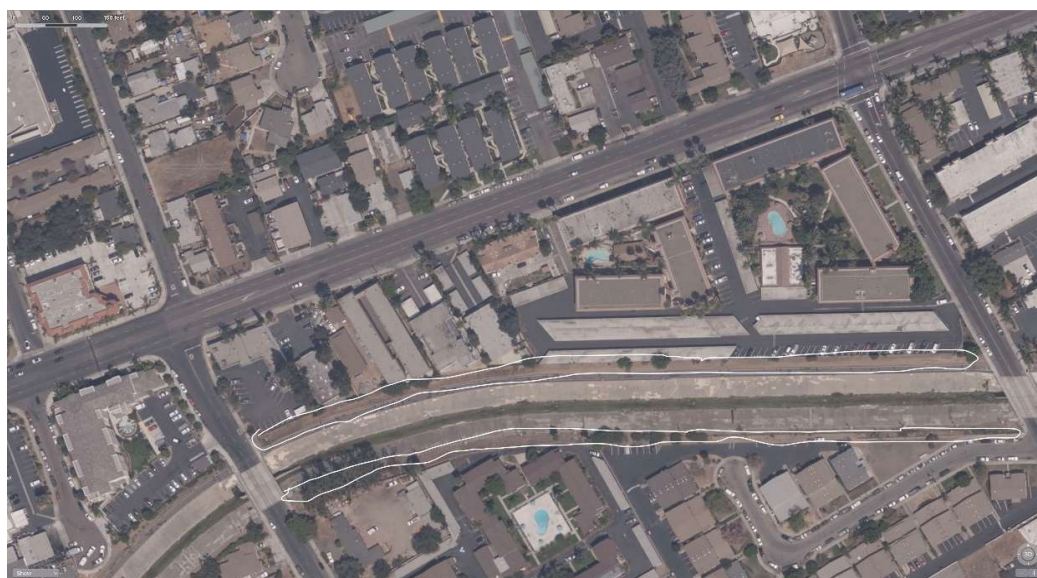


Escondido Transit Center (CG1)

3

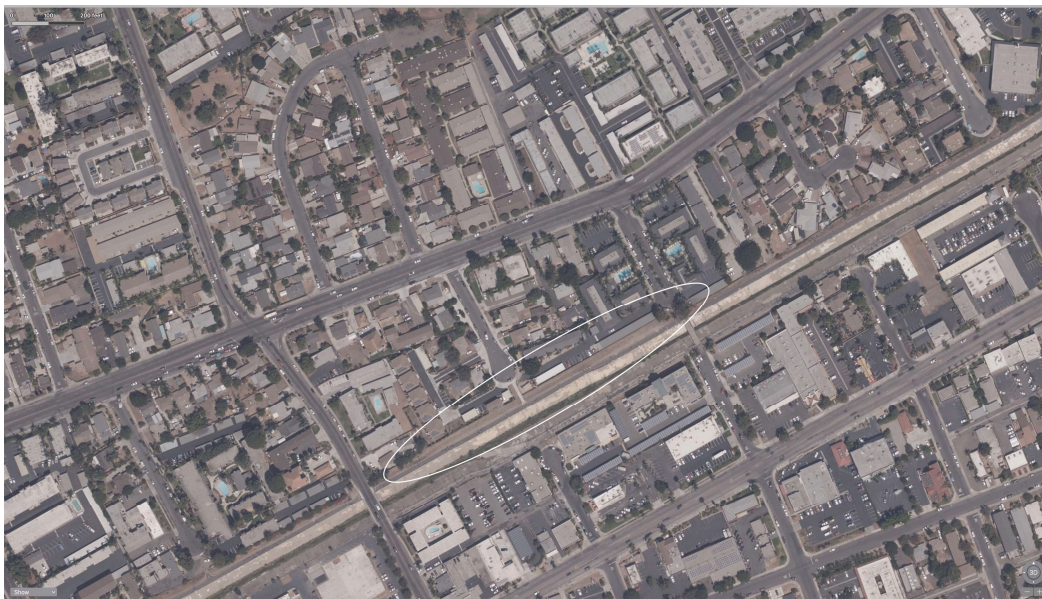


Broadway (CG2)

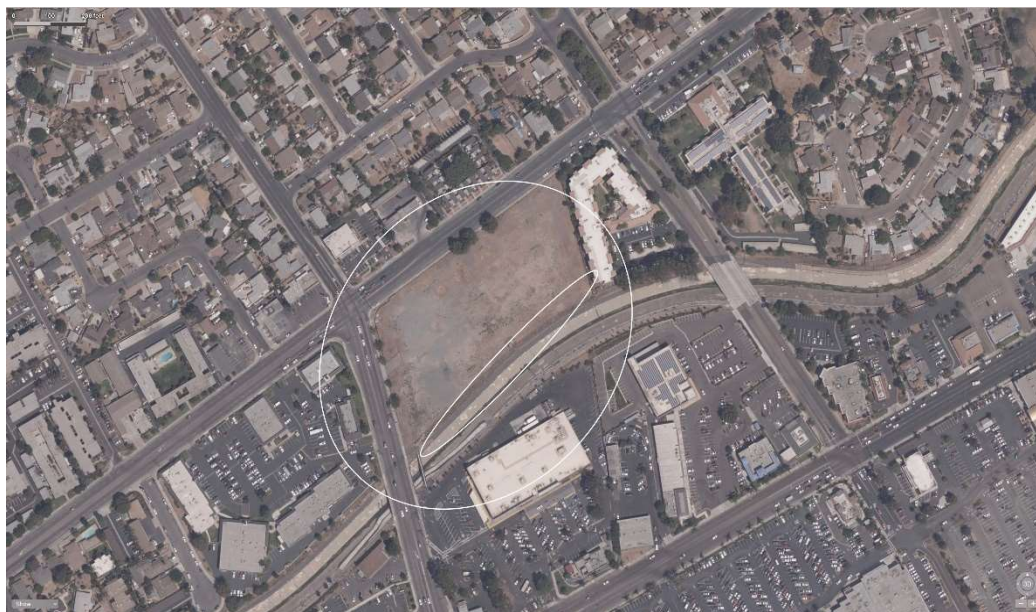


Between Juniper and Hickory (CG3)

4

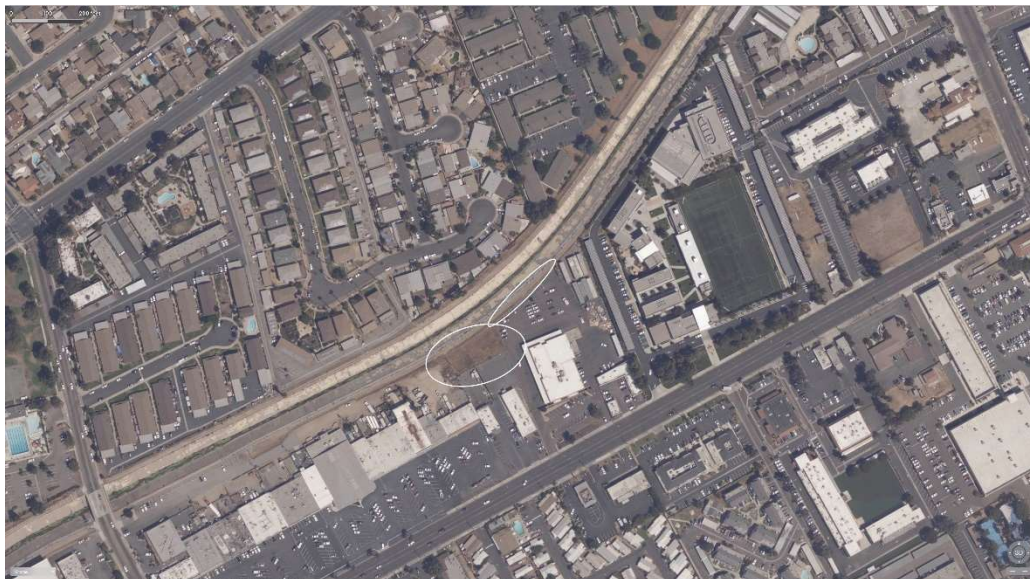


Between Fig and Date (CG4)



Ash (78) and Washington (CG5)

5



East of Rose near US Post Office (CG6)