

Connecting Conservation Corridors

HELP THE ESCONDIDO CREEK
CONSERVANCY PRESERVE THREE
VITAL CONSERVATION PROPERTIES
BY DONATING TO OUR LAND FUND
BEFORE THEY ARE LOST FOREVER!

Photo: Richard Murphy

FOCUSED ON THE HEALTH AND
VITALITY OF THE ESCONDIDO
CREEK WATERSHED SINCE 1991





The actions we take today to preserve what is left of North County's iconic landscapes will make our communities more livable and preserve wildlands for wildlife to thrive forever. There is still time if we act now.

Photo: Chris Gilbert

WE NEED YOUR HELP

People and wildlife need the same things — places to find food, safe shelter, community to find a mate, and a peaceful life to raise their young.

Habitat fragmentation due to development is one of the greatest threats to wildlife survival. This extensive loss of wildlife corridors threatens the survival of many species and increases wildlife conflicts with people and pets.

That's where you come in. With your donation to our Land Fund, the Conservancy can connect habitat corridors in North County by saving three key properties.

The White Atterbury (San Elijo Hills), Elfin Acres (Elfin Forest) and Kesting Dairy (Harmony Grove) properties are for sale and with your help we can purchase them and save them. These properties serve as critical wildlife corridor connections.

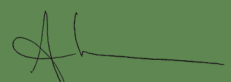
Donate now to our Land Fund to help the Conservancy work towards protecting these properties before they are lost forever.

Thank you for your support!

Sincerely,

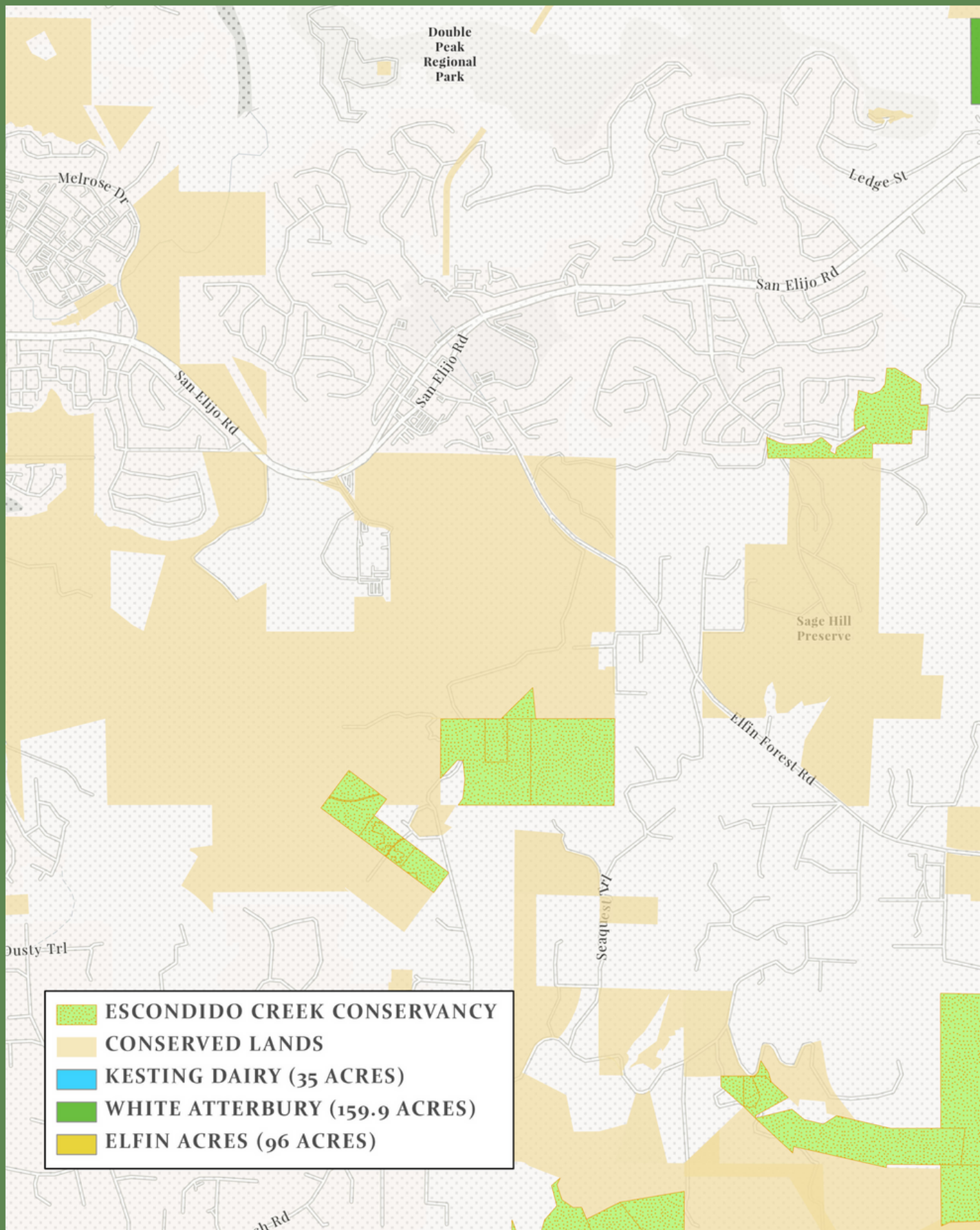


Richard Murphy
President, Board of Directors

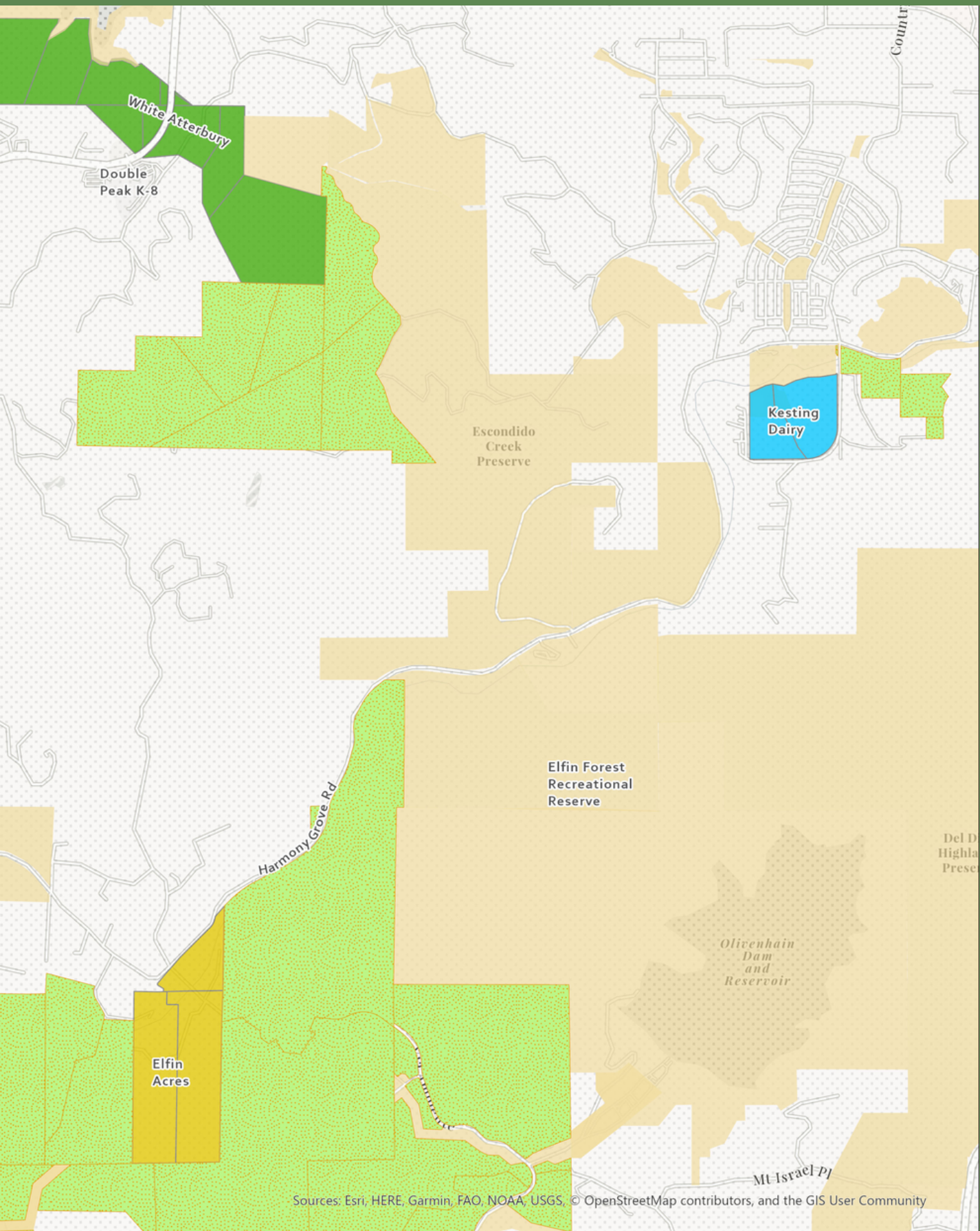


Ann Van Leer
Executive Director

YOUR SUPPORT CAN HELP PRESERVE THREE



CRITICAL CONSERVATION CORRIDORS



Map created by the Conservancy's Preserve Manager Juan Troncoso.

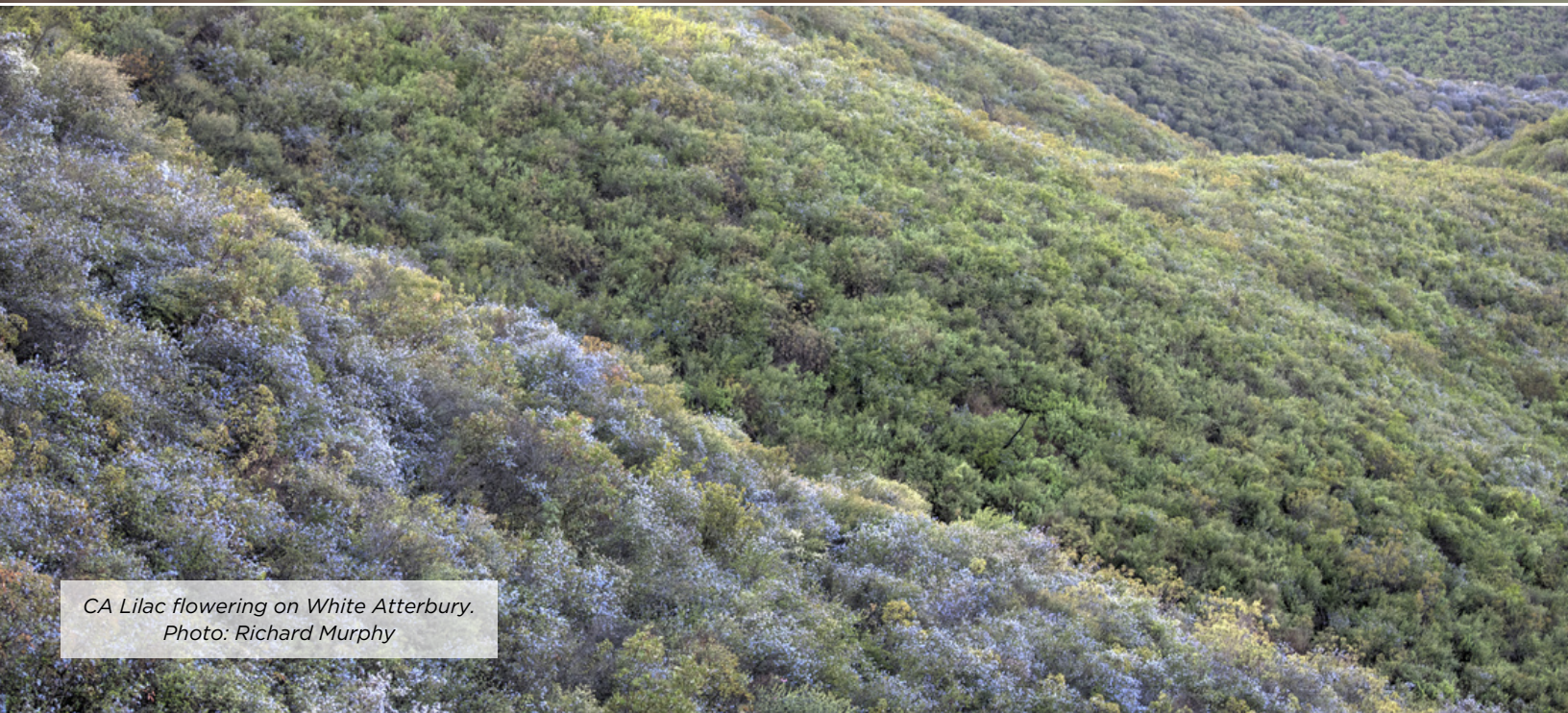
WHITE ATTERBURY



*Frank's Peak and Seasonal Pond.
Photo: Ann Van Leer*



*Green Herons are visitors to the seasonal pond
on the White Atterbury property.
Photo: KSNaturePhotography, Krisztina Scheeff*



*CA Lilac flowering on White Atterbury.
Photo: Richard Murphy*

Why should YOU help the Conservancy save the White Atterbury property?



Connects preserved lands in Harmony Grove with preserved lands in the City of San Marcos.



Creates a continuous protected wildlife corridor connecting the City of San Marcos to the communities of Harmony Grove, Elfin Forest and into Olivenhain.



Protects Frank's Peak, a hillside visible for miles, guaranteeing the preservation of this iconic North County view forever.



Saves an important pond that supports wildlife by giving them a protected place to rest and nest.



Protects the viewshed of San Elijo Hills.

*If this property is developed, rather than protected, it could add 60 to 70 homes
and increase traffic on Twin Oaks Valley Road in San Elijo Hills.*

KESTING DAIRY

Photo: Richard Murphy



Photo: Jim Wilkinson



Coastal CA Gnatcatcher

Photo: KSNaturePhotography, Krisztina Scheeff



Coast sage scrub on the Kesting property
Photo: Richard Murphy

Why should YOU help the Conservancy save the Kesting Dairy property?



Provides a conservation buffer to preserved lands along Escondido Creek near the community of Harmony Grove Village and protects previous restoration investments.



Protects habitat for the least Bell's vireo, an endangered songbird that is slowly making a comeback along Escondido Creek.



Protects coastal sage shrub habitat, a highly threatened landscape in southern California, home to the federally threatened coastal California gnatcatcher.



Protects the viewshed of Harmony Grove Village.



Prevents increased traffic along Harmony Grove Road.

If this land is developed, rather than protected, it will negatively impact riparian systems where numerous endangered species live.

ELFIN ACRES

Photo: Richard Murphy



Photo: Richard Murphy



Photo: Richard Murphy

Why should YOU help the Conservancy save the Elfin Acres property?



Protects one of the last undeveloped landscapes in Elfin Forest, an area with one of the best-preserved coastal sage shrub habitats in southern California.



Fills in a key “hole” in the Conservancy’s Keithley Preserve by adding 96 acres. The Keithley Preserve would then total over 1,000 acres, making it the largest privately owned nature preserve along Escondido Creek.



Connects a critical trail linkage in the Keithly Preserve, preserving access for walkers, equestrians and mountain bikers.



Protects tranquil views of nature from Harmony Grove Road.

If this land is developed, rather than protected, it will destroy homes for deer, mountain lions and numerous rare and endangered plants and animals.

PLANNING FOR TODAY AND TOMORROW

Endowments provide security and allow for creativity. Endowment funds are invested so the Conservancy can run its programs and operations from the earnings. Your major gift to an endowment helps the Conservancy become more sustainable and grow into the future.

ENDOWMENT GOALS

OPERATIONS FUND - \$8 MILLION

To support highly effective professional management and administration to make certain acquisitions are successful because the land can't save itself.

EDUCATION FUND - \$2 MILLION

To seed the future so we can always deliver outdoor education opportunities to local youth and adults.

LAND FUND - \$4 MILLION

To strategically target lands needing protection and care for lands we manage.

BOULDER OUTLOOK - \$350,000

To erase the debt on our office while creating a fund for maintenance.

ADDITIONAL WAYS TO SUPPORT

VOLUNTEER

BECOME A KEEPER OF THE CREEK MONTHLY DONOR

JOIN THE LAND LEGACY SOCIETY AND REMEMBER THE CONSERVANCY IN YOUR ESTATE

Contact executive@escondidocreek.org for more information on how to donate to an endowment or to answer any additional questions about supporting the Conservancy.

THANK YOU FOR YOUR SUPPORT

SCAN TO DONATE



CONTACT US

information@escondidocreek.org
www.escondidocreek.org
PO Box 460791
Escondido, CA 92046
760.471.9354
EIN: 33-0497525



Photo: Chris Gilbert